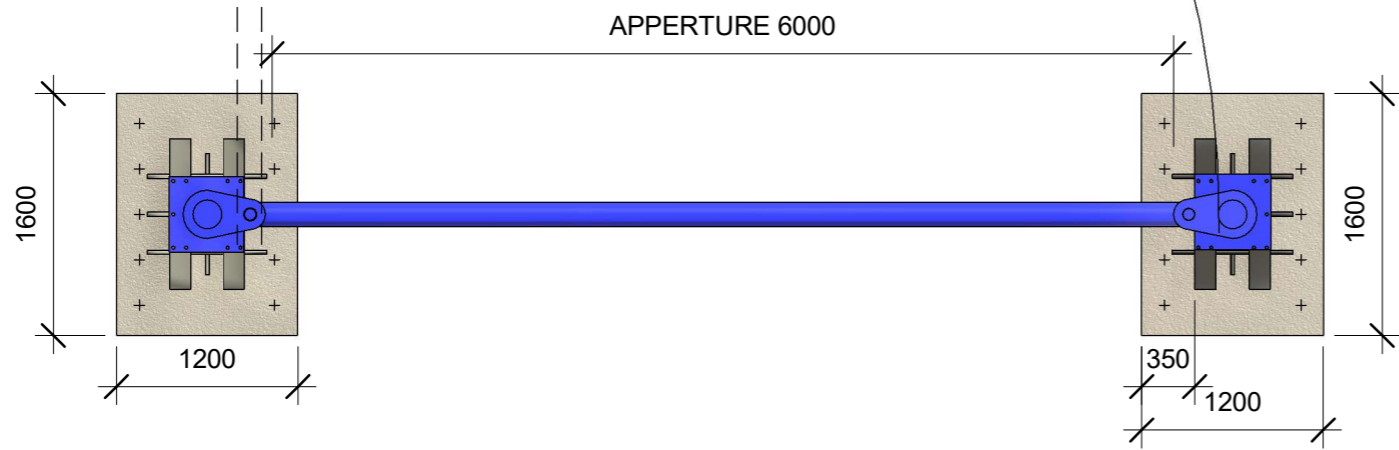
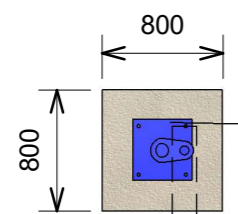
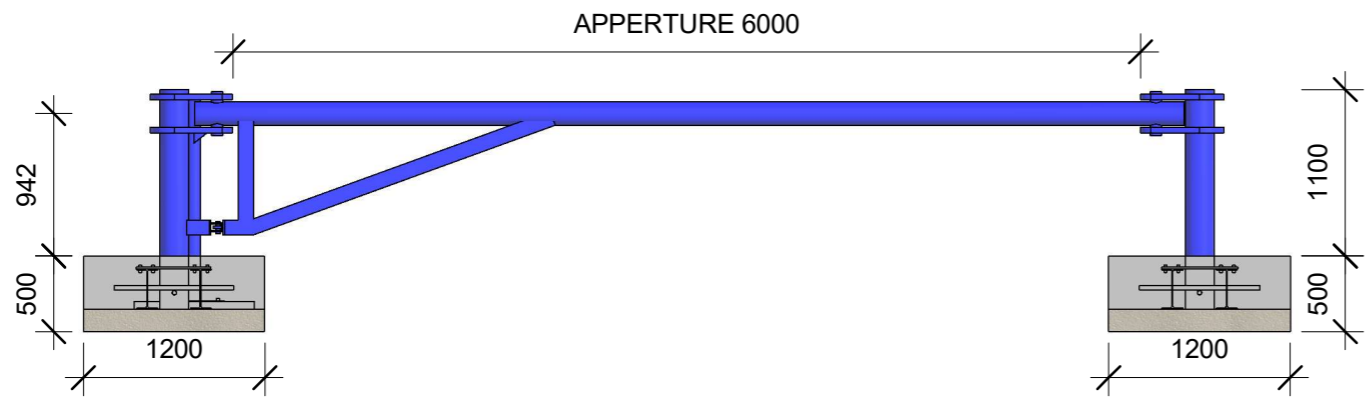


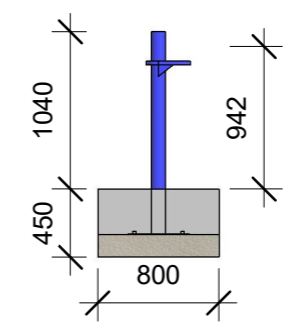
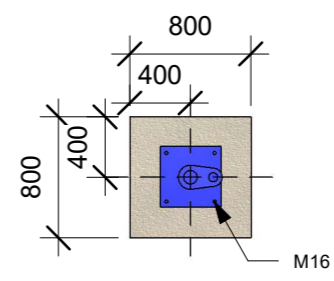
ISS	AUTHOR	CHANGE	CHECKED	REVISED	APPROVED	DATE	CN#
1	AS	ORIGINAL	AA	AA	AA	30.07.2025	



PLAN VIEW



SIDE VIEW



CONCRETE SPECIFICATION
 CONCRETE TO BE A DESIGNED MIX IN ACCORDANCE WITH BS EN 206-1:2000
 CEMENT TO BS EN 197-1:2000
 MAX SIZE OF AGGREGATE - 20mm
 CONCRETE TO GRADE C-50
 MIN. CEMENT CONTENT 275KG/MO
 ALLOW CONCRETE TO CURE FOR 7 DAYS MINIMUM

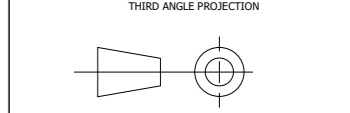
GROUND
 MINIMUM DENSITY TO BE 1400kg/m³.

BASE
 TO BE COMPACTED AND LEVEL

FINISHING SURFACE
 100mm TO CLIENT SPECIFICATION.
 IMPACT TEST TO PAS68 2013 N2 48km/h

- NOTES:**
- 1) FIX TO FIRST POUR FOUNDATION USING M16 PARABOLTS
 - 2) FIRST POUR CONCRETE
 - 3) SECOND POUR CONCRETE
 - 4) 10x REINFORCING BARS PER POST

ALL DIMENSIONS ARE IN MILLIMETERS
 SCALE TOLERANCES
 ISO 2768-m,k



THE INFORMATION CONTAINED IN THIS DRAWING IS CONFIDENTIAL AND MUST NOT BE PASSED IN WHOLE OR IN PART TO THIRD PARTIES WITHOUT THE PERMISSION OF FRONTIER PITTS LTD.



FRONTIER-PITTS MIDDLE EAST
 OFFICE 1301, BUILDING C88,
 COMMERCIAL TOWER A,
 15 BAGHDAD ST, ABU DHABI,
 UNITED ARAB EMIRATES.
 OFFICE: +971-26212272

email: sales@frontierpitts.ae
 website: www.fpgulf.com

CONTRACTOR
 FOR INFORMATION ONLY

SITE
 TERRA 180 SWING GATE
 6M APERTURE
 INSTALLATION