

TERRA STATIC NEPTUNE BOLLARD PAS 68 7.5t @ 64kph



Achieve exceptional security with the Terra static Neptune Bollards, rigorously impact-tested to PAS 68 standards, stopping 7.5 tons at 64kph. These bollards feature a resilient polyester powder-coated finish and offer a variety of customizable sleeves for both strength and style. With a durable polyurathane paint coated finish and customizable sleeve options, these bollards provide reliable protection with an elegant touch.

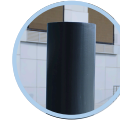
BENEFITS & FEATURES

- PAS 68 Classification Code:
V Static Bollard/7500[N2]/64/90:3.3/0.0
- Impact tested at 7.5 @64 kph which equates to 1185Kj.
- SIRA Approved
- Height above ground: 1000mm
- Diameter: 273mm OD
- Construction: The bollard is made from a hard steel tube using high-strength, low-alloy structural steel that meets European standards.
- Embedment: 600mm, Foundation Type C
- Finish: Shotblasted, hot zinc sprayed (galvanised), primed and finished with a final coat of polyurethane paint.
- Optional finish: 316 Stainless Steel Satin finish or bead blasted sleeves with dome or mitre tops. Other decorative sleeves available on request
- Accreditations: Secured by Design, BRE Global & SIRA



The Terra Neptune Bollards has been successfully impact tested to the British PAS 68 specification stopping 7.5t at 64kph. Painted in any RAL color and coated as standard, with a range of available sleeves, including stainless steel finishes.

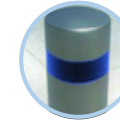
FINISH OPTIONS



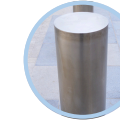
Polyester
Powder
Coated
Sleeves



Polyurathane
Coated
Finish



Bead
Blasted
Stainless
Steel

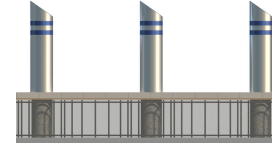


Satin
Polished
Stainless
Steel

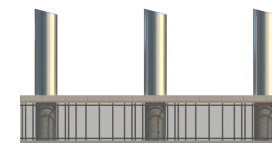


316L
Stainless
Steel Mirror
Finish

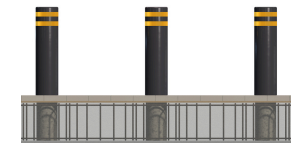
TOP DESIGN OPTIONS



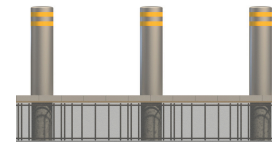
Bollard with Stainless
Steel sleeve Mitre top
and banding



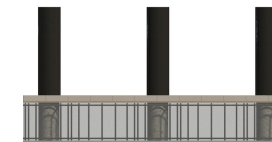
Bollard with Stainless
Steel Sleeve Mitre top



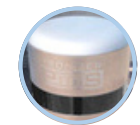
Painted Bollard and
Flat top with Banding



Bollard with Stainless
Steel Sleeve Semidome
with Banding



Bollard Painted Finish
Only



Personalised
Engraving
Available

