

FRONTIER
PITTS



Terra Diamond Turnstile

The Enhanced, High Security Turnstile successfully tested & accredited to LPS 1175: Issue 6.1 Security Rating 3 & 4, 10 minute attack time

CPNI MFES (Forcible Attack) External Perimeter BASE & ENHANCED



Certified to LPS 1175: Issue 6.1
Security Rating 3 & 4
Certificate No. 1059a/01 & 1059a/02



Approved for UK Government Use
(please contact CPNI)
MFES BASE | EP/ ENHANCED 0.5 EP



INSECURE VIEW

SECURE VIEW

The enhanced Terra Diamond Turnstile is the only turnstile currently on the market that has been successfully tested and approved to the Loss Prevention Certification Board (LPCB) LPS 1175 standard Security Rating 3 & 4, and is listed in the Red Book. **correct at time of print*

The Terra Diamond Turnstile is also Approved for Government Use, please contact CPNI. MFES (Manual Forced Entry Standard) Testing BASE 1 EP/ENHANCED 0.5 EP. The Terra Diamond Turnstile is listed in the CPNI Catalogues of Security Equipment



DESIGN FEATURES:

- Heavy duty, high security turnstile
- Anti-return solenoid lock
- Power locking bolt - provides turnstile lock down
- Turnstile seeks next lock position so users cannot become trapped within the unit
- Designed and proven to withstand a considerable degree of physical attack
- Extra high security with a full CPNI approved fenceline integration
- Infilled rotor arms prevent climbing and items being passed through turnstile
- Installed in many Nuclear and Utility sites both nationally and internationally
- Fail secure - turnstile will remain secure during power failure

WHAT IS LPS I 175 TESTING?

LPS I 175 details the requirements and testing procedures for the LPCB approval and listing of intruder resistant building components, strongpoints, security enclosures and free-standing barriers.

Frontier Pitts Ltd has become the first company to achieve LPS I 175 Issue 6 for their full height Terra Diamond Grade 3 and Grade 4 single rotor turnstiles. The turnstiles successfully resisted an intensive attack test programme in accordance with LPS I 175: Issue 6. This involved a series of attack tests each lasting at least **10 minutes** using a wide array of hand tools and battery powered tools. The Terra Diamond turnstiles are the only turnstiles currently on the market that are approved to LPS I 175 Security Ratings 3 and 4.

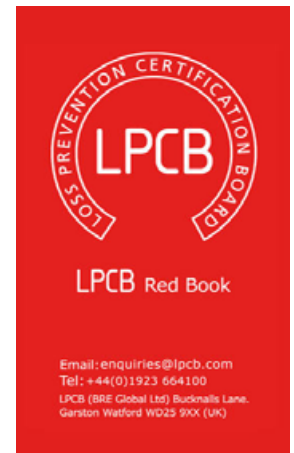


Table illustrating **LPS I 175 Security Ratings**, the **Tool Categories** and the **Test Durations**:

Security rating classification	Tool category	Maximum working time (minutes)	Maximum test duration (minutes)
3	C	5	20
4	D	10	30



The Terra Diamond Turnstile can withstand an attack time of 10 minutes. This protects the sites assets by **DE-TERING** a potential attack initially, or provides the on site man guarding time to **DETECT, DELAY** and **DEFEAT** an attack.

LPS I 175 Tool Sets

Security Rating 3

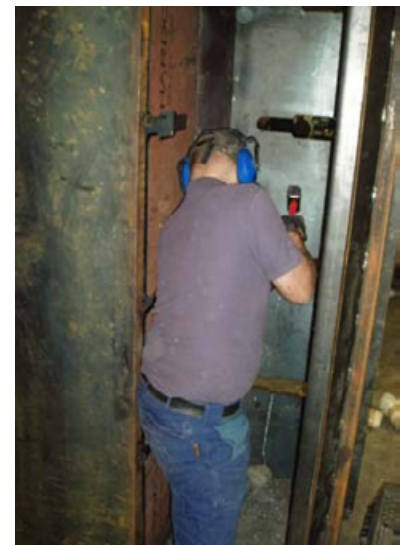
Test Duration 20 minutes

Axe, Cold Chisels, Gas Torch (Butane/Propane), Crowbar, Cordless Drill (+ spare power pack), 400mm Bolt Cutter, Pad Saw.

Security Rating 4

Test Duration 30 minutes

3kg Sledgehammer, Holligan Bar Felling Axe, Cordless Jigsaw, Scissor Jack, General Purpose Saw, Plate Shears.



LPCB testing on the Terra Diamond Turnstile

Loss Prevention Certification Board



This is to certify

FRONTIER-PITTS LIMITED

Crompton House, Crompton Way, Manor Royal Industrial Estate, Crawley, West Sussex RH10 9QZ

is authorised to use the LPCB mark in association with the product(s) listed in this certificate and appendix.

**Terra Diamond Grade 3 and Terra Diamond Grade 4
single full height turnstiles**
(refer to attached appendix for details)

which have complied with the requirements of the following:

LPS 1175: Issue 6 - Requirements and testing procedures for the LPCB approval and listing of intruder resistant building components, strongpoints, security enclosures and free-standing barriers

Certificate No. 1059a

Issue No. 01

Date of Issue 11 July 2011

This certificate is valid until withdrawn by LPCB.
To check the validity and the authenticity of this certificate please visit our website www.RedBookLive.com or contact us.

Signed on behalf of the LPCB

Name: M.L. Aris



LPCB is part of BRE Global Ltd., Garston, Walford WD25 9XX. Tel +44 (0)1923 664100
Fax +44 (0)1923 664603 www.RedBookLive.com

This certificate remains the property of BRE Global Ltd and is issued subject to terms and conditions and is maintained and held in force through regular surveillance activities

Certificate of Product Approval

Certificate Number: 1059a

Issue: 02

Frontier Pitts Ltd

Crompton House
Crompton Way
Manor Royal Industrial Estate
Crawley
West Sussex RH10 9QZ

is authorised to use the LPCB mark in association with the product(s) listed in this certificate and appendix having complied with the requirements of the standard(s) detailed below:

Products

**Terra Diamond Grade 3 and
Terra Diamond Grade 4**
full height turnstiles

Standard

LPS 1175: Issue 6
Requirements and testing procedures for the LPCB approval and listing of intruder resistant building components, strongpoints, security enclosures and free-standing barriers

This certificate and appendix is maintained and held in force through regular surveillance activities

P. Dillon
Signed for LPCB

Paul Dillon
Verifier

11 October 2013
Date of Issue

11 July 2011
Date of First Issue



This certificate and appendix remain the property of BRE Global Ltd and is issued subject to terms and conditions (for details visit www.redbooklive.com/terms).

To check the validity of this certificate and appendix please visit www.redbooklive.com/check, scan the QR tag or contact us.

LPCB is part of BRE Global Ltd, Garston, Watford, WD25 9HX
T: +44 (0)1923 664100 F: +44 (0)1923 666002 E: enquiries@breglobal.com



bre

Full Height Turnstile

Product Name	Type	Number of Rotor Arms	Walkway Width (m)	Nominal Overall Unit Height (m)	Nominal Overall Unit Width (m)	Nominal Overall Unit Depth (m)	Security Rating ^{1,2,3}	LPCB Ref. No.
Terra Diamond Grade 3	Single full height turnstile	Four	0.5	2.387	1.380	1.390	3	1059a/01
Terra Diamond Grade 4	Single full height turnstile	Four	0.5	2.387	1.380	1.390	4	1059a/02

Notes:

1. This is measured at the outside entrance to the turnstile.
2. These dimensions are of the entire unit. They include the enclosure above the rotor that contains the drive and control mechanism, but exclude those of the foundations.
3. The turnstiles achieve these security ratings when installed and maintained in accordance with the instructions contained in the Terra Diamond Turnstile Operating and Maintenance Manual (document reference 6614-OBM Issue 4 dated 7 April 2011) and 'Diamond Turnstile Installation Procedure (document reference 6614-IP Issue 2 dated 9 March 2011), placed in the 'power to release' (normal automatic) mode and operated from the 'attack' side using an access control system⁴ having at least 30,000 effective differs that offers compatible resistance to manual attack.
4. The turnstiles offer resistance to attack commensurate with at least Security Rating 1 when placed in the 'manual release' mode.
5. The security ratings noted indicate the turnstile's resistance to forced entry from the outside when mounted within barriers that offer compatible resistance to forced entry in accordance with LPS 1175: Issue 6.
6. The resistance of the access control system, used to operate the turnstiles, to 'non-mechanical' attack is not covered as it is outside the scope of LPS 1175: Issue 6. Likewise, the approval does not cover possible effects of any susceptibilities relating to the functionality and performance of any access control equipment that may be used to operate the turnstiles. This is because the scope of access control devices and system configurations that may be used with these locking systems is "infinite". It is therefore recommended that specifier satisfy themselves that the components used are either resistant to mechanical and other forms of tampering/abuse, or that they are suitably protected from such tampering/abuse and are resistant to any environmental conditions/interference that may cause the locking system to disengage.

This certificate and appendix is maintained and held in force through regular surveillance activities


Signed for LPCB

Paul Dillon
Verifier

11 October 2013
Date of Issue

11 July 2011
Date of First Issue



This certificate and appendix remain the property of BRE Global Ltd and is issued subject to terms and conditions (for details visit www.reliability.com/terms).

To check the validity of this certificate and appendix please visit www.reliability.com/check, scan the QR tag or contact us.

LPCB is part of BRE Global Ltd, Garston, Watford WD25 90K.
T: +44 (0)1923 666100 F: +44 (0)1923 666603 E: enquiries@breglobal.com



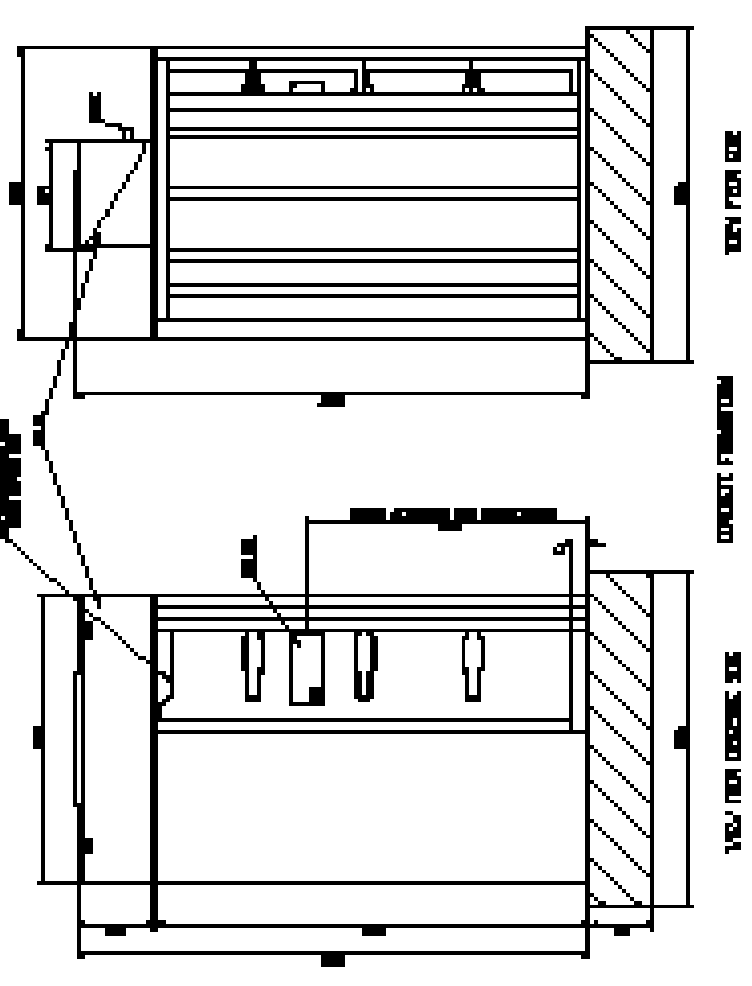
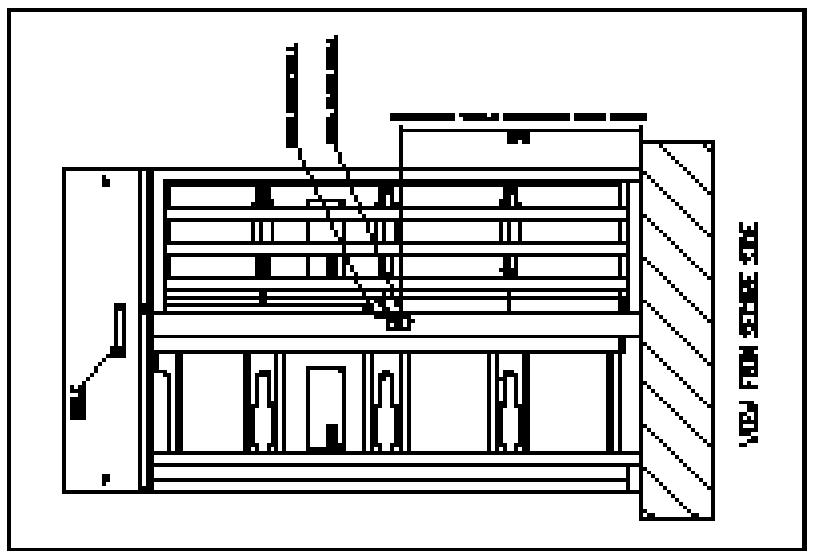
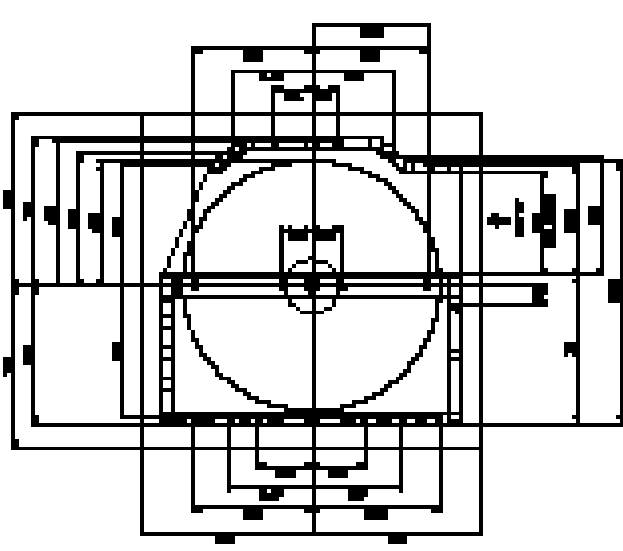
bre

F IN DOUBT ASK

CPNI

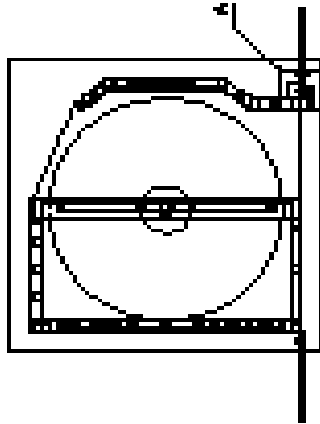
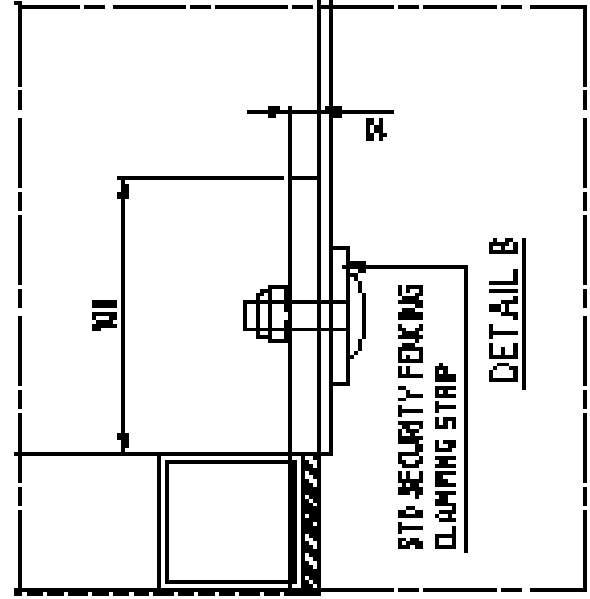
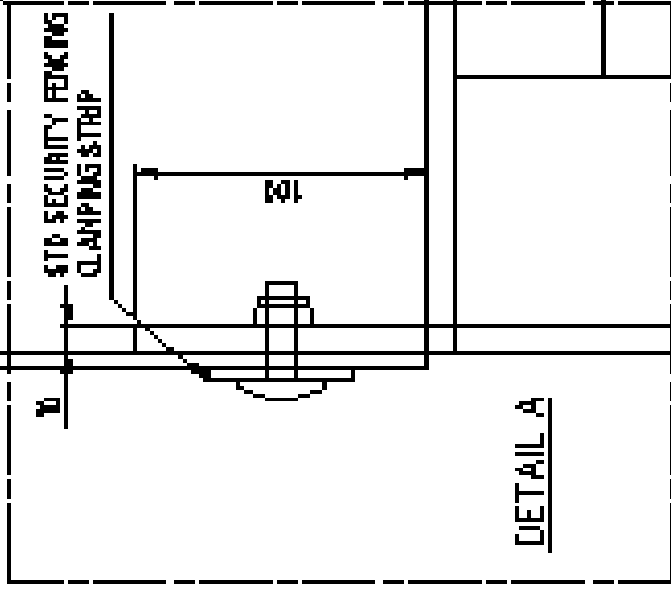
APPROVED FOR USE: GOVERNMENT USE
FOR DETAILS CONTACT GRC

REMOVE ALL HARDWARE FROM SURF OF ALL CASES EXCEPT AS NOTED TO BE RE-INSTALLED TO BE USED IN NEW CONSTRUCTION. ALL HARDWARE TO BE USED IN NEW CONSTRUCTION TO BE USED IN NEW CONSTRUCTION TO BE USED IN NEW CONSTRUCTION.

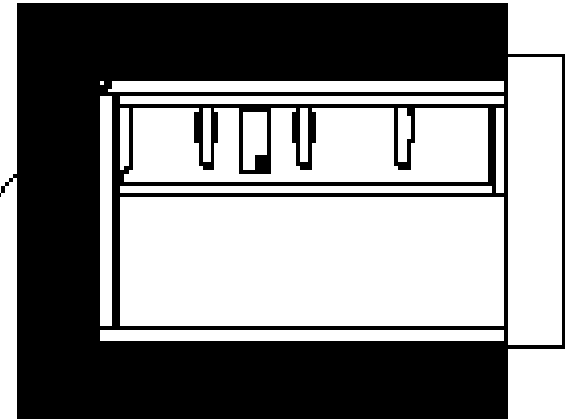
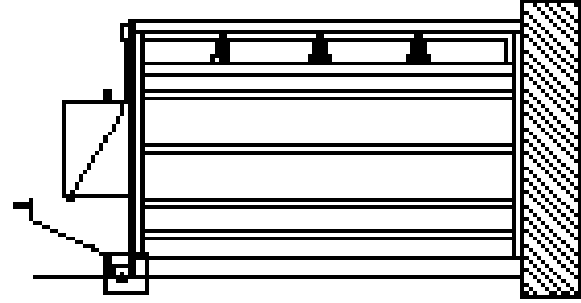


NO.	REV.	DATE	BY	CHKD	APP'D	TITL	MFR	QTY	MATERIALS	FINISH	PAINT	ELECTRICAL	PLUMBING	MECHANICAL	OTHER	REMARKS	
<p style="text-align: center;"> </p> <p style="text-align: center;">BY LABEL PROVIDED</p> <p style="text-align: center;"> </p> <p style="text-align: center;"> <small> PRECISION PRINTING CO. 1500 E. 10TH ST., SUITE 100 DENVER, CO 80202 PHONE: (303) 733-7300 FAX: (303) 733-7301 WWW.PRECISIONPRINTING.COM </small> </p>										<p style="text-align: center;"> DAVISS MARKETS INSTALLATION DRAWING </p>		<p style="text-align: right;"> DRAWN BY: _____ DATE: _____ </p>					

ALL ANGLES ARE PERPENDICULAR UNLESS
 OTHERWISE NOTED IF IN DOUBT ASK



USE PLATE CLAMP TO ATTACH POST TO VERGULE
 ON THE SIDE OF THE VERGULE



CONSULT DESIGN OFFICE IF ROADWAY IS NOT LEVEL TO ± 3MM

PRINTED
P&S

FOR ALL OTHERS
 CONTACT THE
 DESIGN OFFICE
 FOR ALL OTHERS
 CONTACT THE
 DESIGN OFFICE

P 111

FOR ALL OTHERS
 CONTACT THE
 DESIGN OFFICE

FOR ALL OTHERS
 CONTACT THE
 DESIGN OFFICE

P 111



Frontier Pitts achieves a revolution in turnstile performance!

Frontier Pitts Ltd has become the first company to achieve LPS 1175 Issue 6 for their full height Terra Diamond Grade 3 and Grade 4 single rotor turnstiles. The turnstiles successfully resisted an intensive attack test programme in accordance with LPS 1175: Issue 6. These involved a series of attack tests each lasting at least 10 minutes using a wide array of hand tools and battery powered tools. The Terra Diamond turnstiles are the only turnstiles currently on the market that are approved to LPS 1175 Security Ratings 3 and 4.

Sally Osmond, Brand & Development Manager of Frontier Pitts commented

"After months of development, we are very happy to see the Terra Diamond Turnstile leading the way in improving perimeter security. We are proud to have successfully completed LPCB certification and be the first perimeter security company to receive the Red Book listing for turnstiles".

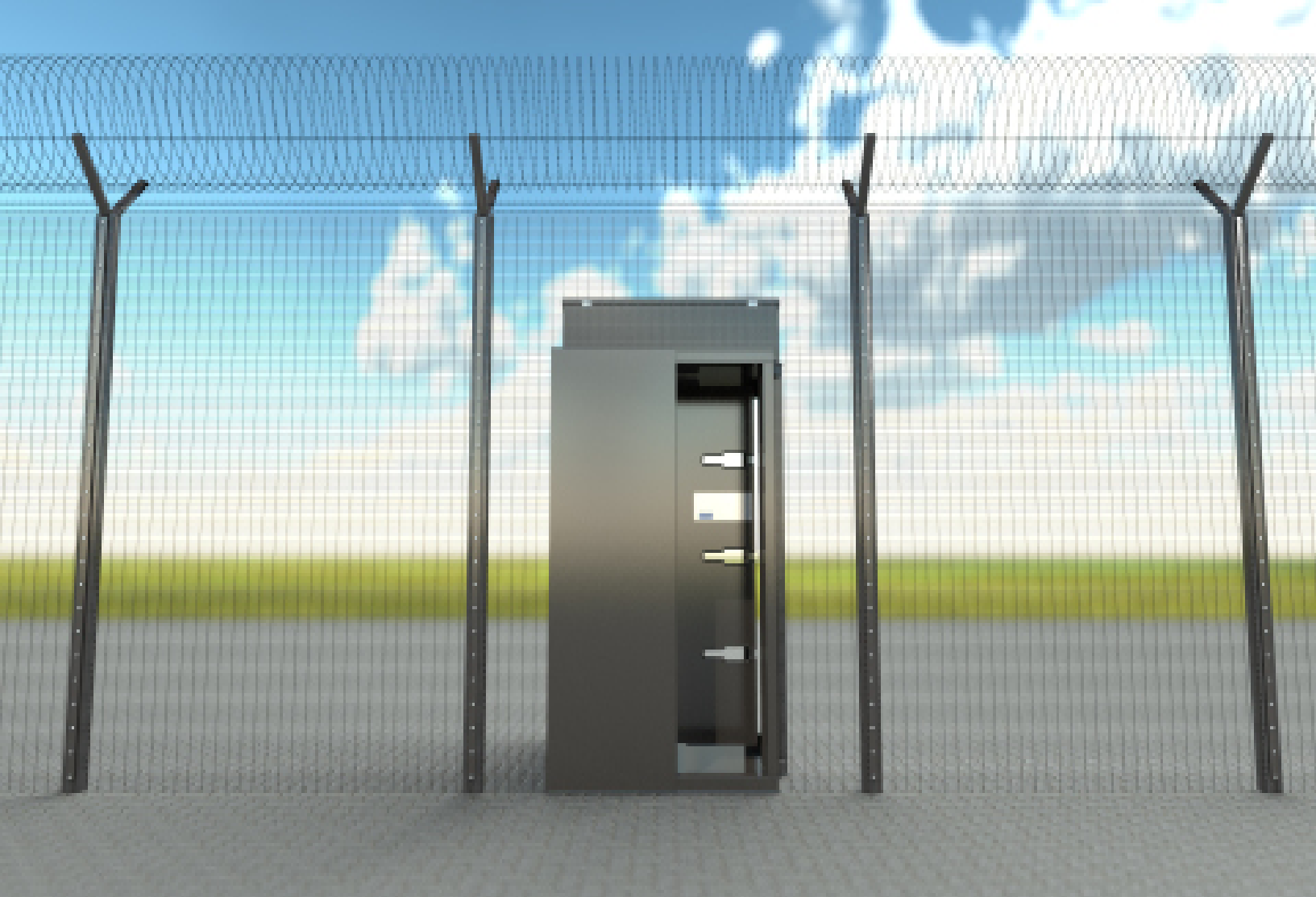
Richard Flint, LPCB's Physical Security Certification Scheme Manager said

"LPCB are delighted to issue this approval. It is a great achievement for Frontier Pitts to become the first company to have their turnstiles approved by us. Furthermore, the ratings achieved by these turnstiles confirm they offer significant levels of resistance to forced entry.

- ENDS -

Technical enquiries: RICHARD FLINT, +44(0)1923 665120, flintr@bre.co.uk

Press enquiries: NATALIE WIGSTON, +44(0)1923 665138, wigstonn@bre.co.uk



Terra Diamond Turnstile

From the British Manufacturer of Security Gates, Barriers,
Blockers, Bollards & Turnstiles



Frontier Pitts Ltd
Crompton House, Crompton Way, Manor Royal Industrial Estate,
Crawley, West Sussex, RH10 9QZ. UK

Tel: +44 1293 422800 Email: sales@frontierpitts.com