



# TERRA Earth Bollard

7.2t @ 80kph

## FEATURES


- Crash Tested to the latest ISO regulation
- Crash Rating: Tested to withstand the impact of a 7.2 ton vehicle at 80 kph
- Finish: HDG (Hot-Dip Galvanized) and epoxy coated as standard
- Optional Sleeves: Available in a range of finishes, including stainless steel
- Equivalent to PAS68, 1 meter penetration.
- Applications: Ideal for protecting high-security entrances, data centers, energy facilities, airports, and other critical infrastructure



## SPECIFICATION


- Type: Root fixed for bollard with foundation type C.
- Height Above Ground: 1080 mm
- Diameter: 298 mm
- Top Style: Flat top (standard)
- Installation: Root fixed with rebar reinforcement
- Impact Performance: Tested in the UK by MIRA 1778 kJ impact energy
- Finish Options: Shot blasted, hot zinc sprayed, or galvanized
- Colour: Painted to any RAL colour (Available color in warehouse RAL7024-Graphite Grey)
- Testing: Tested as one unit.

## CONTACT US

 00971 2 621 2272

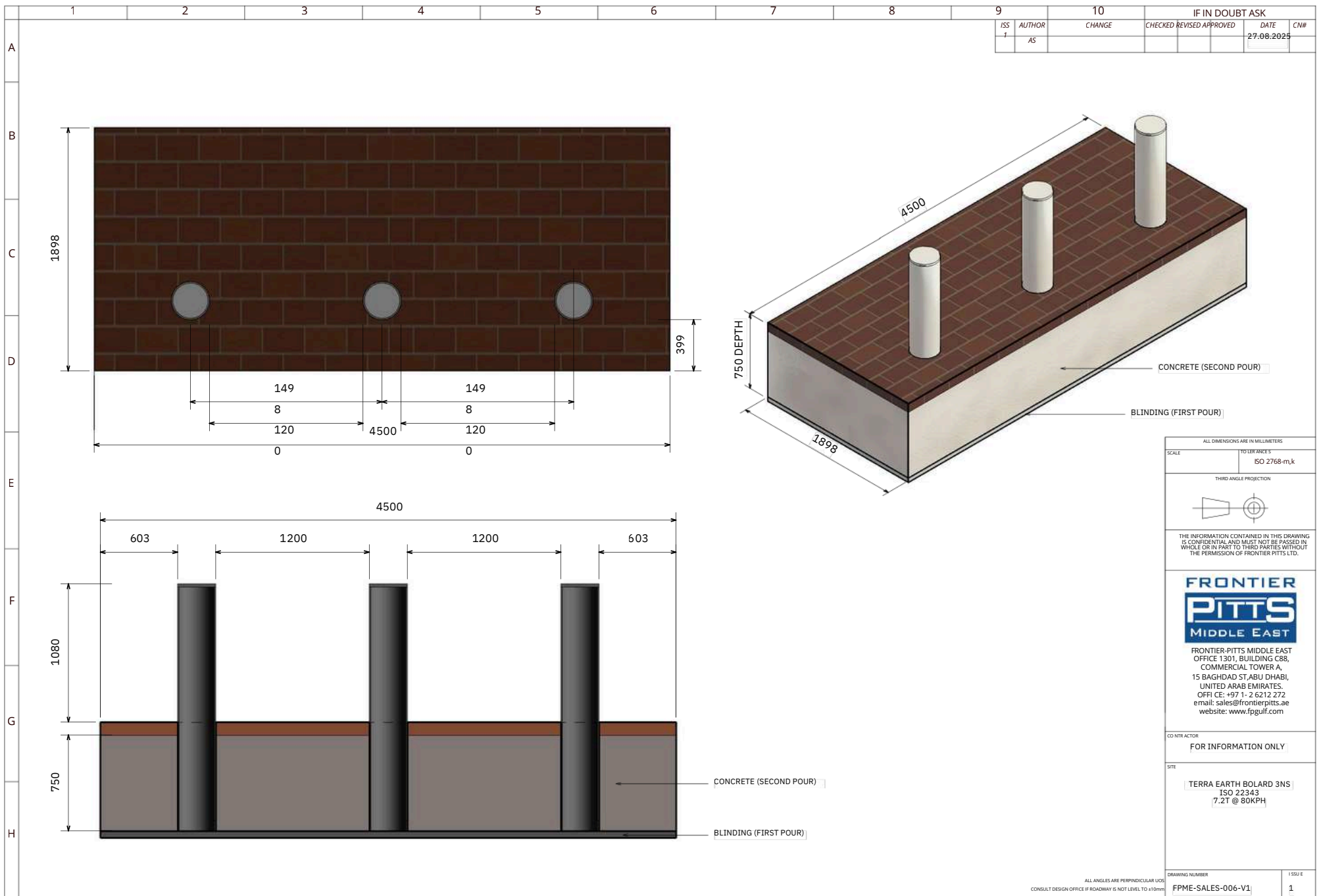
 [www.fpgulf.com](http://www.fpgulf.com)

 Office 1301, Building C88,  
Commercial Tower A, 15 Baghdad  
St, Abu Dhabi, UAE

 [sales@frontierpitts.ae](mailto:sales@frontierpitts.ae)



**FRONTIER  
PITTS**  
MIDDLE EAST



ALL DIMENSIONS ARE IN MILLIMETERS

SCALE: 1:100

ISO 2768-m,k

THIRD ANGLE PROJECTION

THE INFORMATION CONTAINED IN THIS DRAWING IS CONFIDENTIAL AND MUST NOT BE PASSED IN WHOLE OR IN PART TO THIRD PARTIES WITHOUT THE PERMISSION OF FRONTIER PITTS LTD.

**FRONTIER PITTS MIDDLE EAST**

FRONTIER-PITTS MIDDLE EAST  
OFFICE 1301, BUILDING C88,  
COMMERCIAL TOWER A,  
15 BAGHDAD ST, ABU DHABI,  
UNITED ARAB EMIRATES.  
OFFICE: +971-2-6212 272  
email: sales@frontierpitts.ae  
website: www.fpgulf.com

CD NTR ACTOR

FOR INFORMATION ONLY

SITE

TERRA EARTH BOLARD 3NS  
ISO 22343  
(7.2T @ 80KPH)

DRAWING NUMBER

FPME-SALES-006-V1

1

ALL ANGLES ARE PERPENDICULAR UNLESS  
CONSULT DESIGN OFFICE IF ROADWAY IS NOT LEVEL TO ±10mm