

# URBAN SHIELD 900

## Battery-Operated Retractable Bollard

### PRODUCT OVERVIEW

The Urban Shield 900 is a next-generation, battery-powered retractable bollard designed for urban environments, commercial properties, and medium zones. Engineered for ease of installation and reliable operation, it provides both pedestrian safety and vehicle access control without requiring complex cabling or costly groundwork.

### APPLICATIONS

- Urban pedestrian zones
- Parking management
- Commercial building secondary access
- Private car park where access is limited
- Event venues and restricted areas

### SURFACE MOUNT BOLLARD

- Battery Operated – Independent power system eliminates the need for mains wiring.
- High-Security Design – Durable stainless steel structure with reinforced base.
- Compact & Sleek – Minimalistic look suited for modern urban landscapes.
- LED Indicator Ring – Clear visibility during day and night operations.
- Secure Access – Optional key or remote control operation.
- Energy Efficient – Optimized for extended battery life.

### TECHNICAL SPECIFICATIONS

- Model Name: Urban Shield 900
- Operation: Battery-powered retractable system
- Material: Stainless Steel (upper section), Matte Black Steel (lower base)
- Finish: Brushed stainless with anti-corrosion coating
- Height (Raised): 900 mm
- Diameter: 135 mm (customizable)
- LED Ring: Configurable in red, blue, or white
- Control: Key switch or wireless remote
- Installation: Surface mount with secure anchoring
- No external cabinet required
- Normal operator of up to 50 cycles per charge
- Comes with two rechargeable batteries

FRONTIER  
**PITTS**  
MIDDLE EAST



00971 2 621 2272

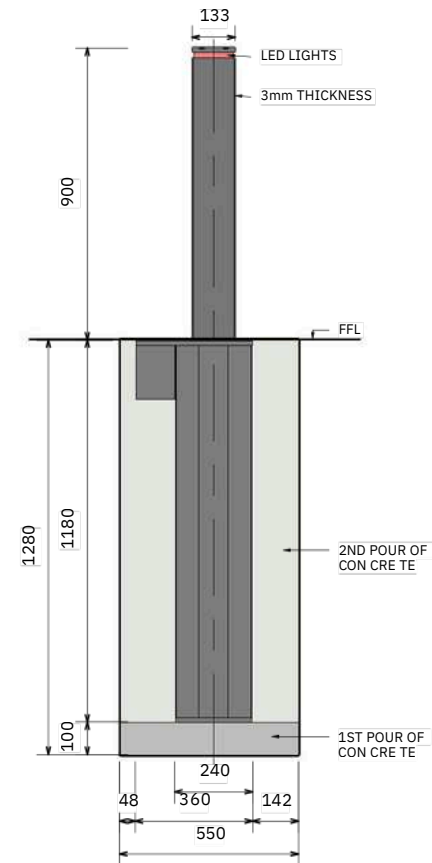
www.fpgulf.com

Office 1301, Building C88,  
Commercial Tower A, 15 Baghdad  
St, Abu Dhabi, UAE

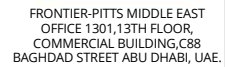
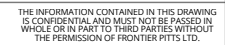
sales@frontierpitts.ae

A
B
C
D
E
F
G
H

•



THIRD ANGLE PROJECTION



CONTRACTOR	
------------	--

DRAWING NUMBER  
FPME-SALES-017-V1

1

ALL ANGLES ARE PERPENDICULAR UNLESS NOTED OTHERWISE  
CONSULT DESIGN OFFICE IF ROADWAY IS NOT LEVEL TO  $\pm 10\text{mm}$